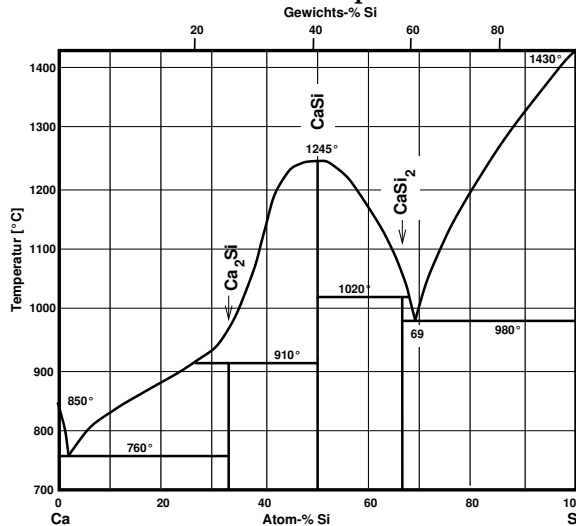
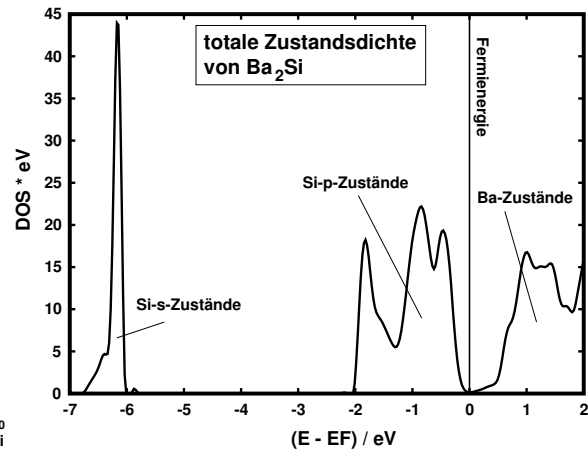


6. Zintl-Phasen (A1-B2)

6.1 Zintl-Klemm-Konzept



Phasendiagramm Ca-Si

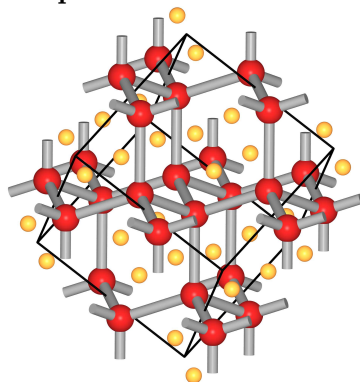


Totale DOS von Ba₂Si

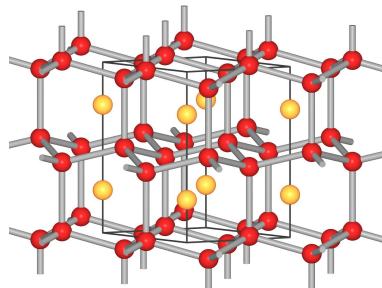
6.2 Binäre Zintl-Phasen

mittlere BO	BO	B2-Element					
		E(III)	E(IV)	E(V)	E(VI)	E(VII)	E(VIII)
4	4	NaTl, CaGa ₂	Si				
3.82	36*4, 8*3		K ₈ Si ₄₄				
3	3	Na ₂ Tl	RbSn	P ₄			
			CaSi ₂	As			
2.5	2*2, 2*3		Ba ₃ Si ₄				
2.333	2*2, 1*3			BaSb ₃			
2	2		CaSi	LiAs, CaSb ₂	Se		
1.67	4*2, 2*1			Sr ₂ Sb ₃			
1.5	2*2, 2*1				Sr(en) ₄ Se ₄		
1.25	1*2, 2*1				Ba(en) ₃ Te ₃ · en		
1	1				CaTe ₂	I ₂	
0.66	1*0, 2*1		Ca ₅ Si ₃				
0.5	2*0, 2*1			Ba ₅ Sb ₄			
0	0		Ba ₂ Pb	K ₃ Sb	BaTe	BaI ₂	Xe

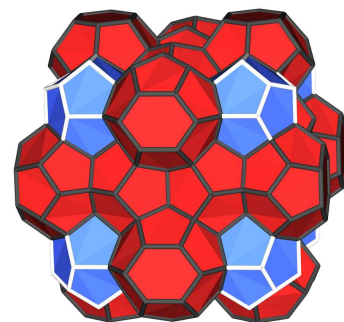
Beispiele für Strukturen von Zintl-Phasen:



NaTl



CaGa₂



K₈Sn₄₄